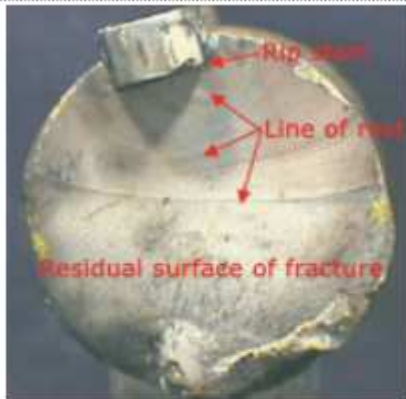


Broken motor shaft caused by too much belt tension.

Symptoms : Motor runs OK initially, with some additional drag, but after running some time, weeks or months, shaft fatigues and breaks, always just outside the motor, leaving characteristic smooth to slightly grainy surface.



a)

a) Typical shaft fracture pattern at high transverse forces



b)

b) In comparison to shaft fracture pattern as a result of torsional overload with no effect from excess transverse forces

See also how to tension a belt:
<https://www.youtube.com/watch?v=FMiB3CnZpRc>